



Newstead Primary
School



Welcome to Willow Class
Foundation Stage 2

Welcome

On behalf of the entire school team, staff, children and governors, I would like to take this opportunity to welcome you to Newstead Primary School and Nursery. This prospectus aims to give you a flavour of the school and attempts to provide you with as much initial information as possible.

We hope this will be the beginning of a long and successful partnership where we work together to provide the best possible education for your child.

At Newstead Primary School we aim to provide a caring environment in which all children feel safe and secure. We offer a wide range of learning opportunities in order to enable each child to develop an enquiring mind and a thirst for knowledge. We expect the children to work hard in order to achieve the best possible standards in all areas of the curriculum. We insist upon high standards of behaviour at all times and have been widely praised for the positive ethos within the school. We have an excellent and supportive Governing Body and a committed and talented staff who work very hard to help each child achieve their potential.

We are an open and friendly school and we value your contribution, whether it takes the form of attending parents' evenings and school events, helping in school, or sharing any concerns or worries you may have with us.

I look forward to working with you and your child.

Yours sincerely

Helen Woodward.

Head Teacher.

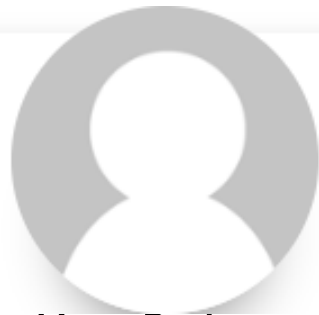
Meet the team



Mrs Morgan



Mrs Shipstone



Mrs Roberts

Session times

School begins at 8.50am (come to the driveway - green gates)

Lunchtime 12.15pm-1.15pm

School ends at 3.30pm



School uniform

Boys Grey trousers or shorts
White/blue t-shirt
Blue sweatshirt or jumper
Plain black shoes

Girls Grey trousers, skirt
pinafore dress, shorts
white t-shirt/shirt
blue sweatshirt,
cardigan or jumper
Plain black shoes



What is School Readiness?

- Turn Taking
- Using good manners
- Recognise their own name
- Talking and listening skills - two way conversations
- Pays attention whilst listening to a story
- asks how and why questions
- Using a knife and fork
- Dress and undress themselves

Characteristics of Learning

We will report to you how your child learns using these Characteristics of learning. Your child will have many opportunities through play to develop these skills.

- Playing & exploring - finding out and exploring, using what they know in their play, being willing to have a go
- Active learning - being involved and concentrating, keeping on trying, enjoying achieving what they set out to do
- Creating and thinking critically- having their own ideas, using what they already know to learn new things, choosing ways to do things and finding new ways

Please remember that every child is different. Don't worry if others are progressing differently.



Toileting

We expect children to be toilet trained when coming into full time school. However we appreciate that some children may have the do accident. Please provide a bag with some spare clothes and wet wipes. This will remain on your childs peg.

Children with special educational needs and/or disabilities who still wear nappies or pull -ups will need a written personal and intimate care plan. This needs to be discussed with the class teacher.



Snack time

Children receive a free third pint of milk free of charge until their 5th birthday. Register using the form in your child's admission pack or through the cool milk website - www.coolmilk.com

The school fruit and vegetable scheme entitles children in FS and KS1 to a piece of fruit each day, this is free of charge.

Learning Journal

We use a scrap book journal to track your child's journal through their time in Foundation. We include photos, your child's word's and 'wow' pieces of work.

You are welcome to view these during key events during the school year.



Absence and lateness

If your child is ill, please contact the school office as early as possible on the first morning of absence. A message may be left of the answerphone.

If your child is late, please bring them to the school office to obtain their attendance and dinner mark.

We work closely with Education Welfare Service to promote regular and punctual attendance.



Clothing

Please label all jumpers/ cardigans etc with your child's name. This will help us return all belongings to the right child.



Contact details

amorgan@newstead.notts.sch.uk

office@newstead.notts.sch.uk

01623 753681